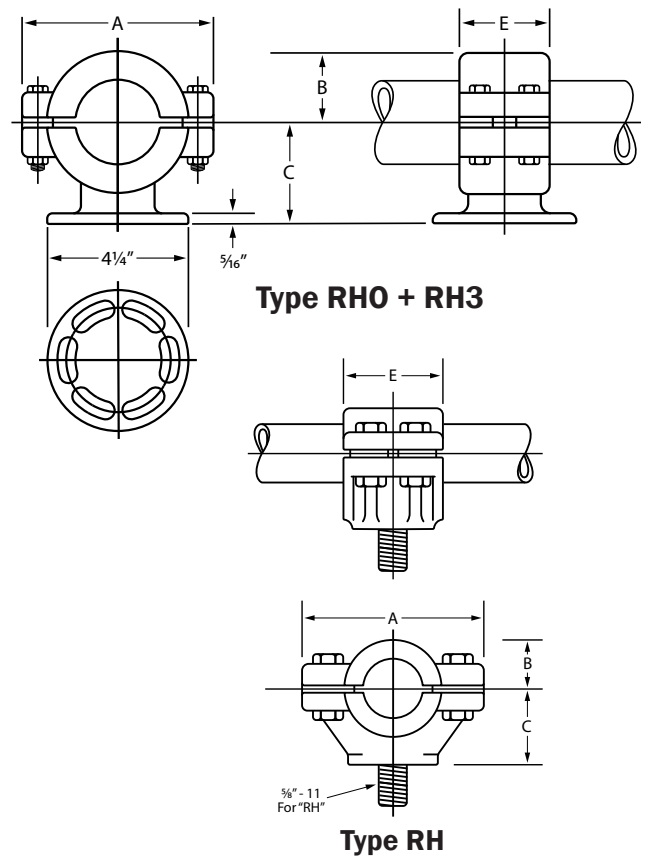
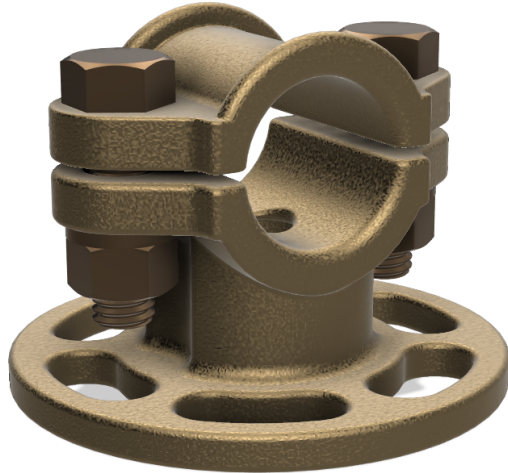


Bus Support Fittings + Hardware

Type R For Tubing



Type "R" bus support is a cast-to-size unit specifically designed for use with round tube bus-either S.P.S. (Schedule 40) or E.H.P.S. (Schedule 80) size. "RH" bus supports for tubing sized up to and including 1 1/4" have two clamping bolts; 1 1/2" and up have four clamping bolts (as shown). "RH0" and "RH3" for tubing sized up to and including 1" have two clamping bolts; 1 1/2" and up have four clamping bolts (as shown). All furnished with lockwashers. Spacers between clamping portions provide slip fit so tubing may expand or contract without straining bus support. If slip fit is not desired, remove spacers. Available for tube sized 1/2" to 3" as standard. Supports for larger tubing are available.

S.P.S. SIZE	3" Bolt-Circle			5" Bolt-Circle		
	Catalog No.	Dim. In Inches		Catalog No.	Dim. In Inches	
		B	C		B	C
1/2"	630613	11/16	1 3/4	630615	11/16	2 1/2
3/4"	630623	7/8	2	630625	7/8	2 3/4
1"	630633	1	2	630635	1	2 3/4
1 1/4"	630643	1 3/16	2 1/4	630645	1 3/16	3
1 1/2"	630653	1 5/16	2 1/2	630655	1 5/16	3 1/4
2"	630663	1 5/8	2 1/2	630665	1 5/8	3 1/4
2 1/2"	630673	1 7/8	3	630675	1 7/8	3 3/4
3"	630683	2 3/16	3	630685	2 3/16	3 3/4
3 1/2"	630693	2 3/4	4 1/4	630695	2 3/4	4 1/2
4"	630703	3	4 1/4	630705	3	4 1/2

For cross reference or other
information, please contact us.
deltastarcc.com



**DELTA STAR
CONNECTOR COMPANY**

